

This factsheet is a quick reference on demographics, length of hospital stay, and the health and well-being of children with burn injury.

The data in this factsheet are from the Burn Injury Model Systems National Database, a prospective longitudinal multi-center research study that examines the functional and psychosocial outcomes of children following burns. Researchers collect data at 6 months, 12 months, 24 months, and every 5 years after injury.

As of Dec. 2015, the database included information on 2,118 children (<18) with burn injury. For more information, visit <http://www.msctc.org/publications/detail/1803>

The majority of children in the database are boys and Hispanic. Children are most often burned by fire or flame.

For children who return to school within 2 years post-injury, the average number of days to return to school was 91 days.

The yearly average total body surface area burned for children varies, and has ranged from 16% to 48% since 1994.

See next page for the mental and physical health conditions of children with burn injury.

Demographics at Time of Injury

Sex



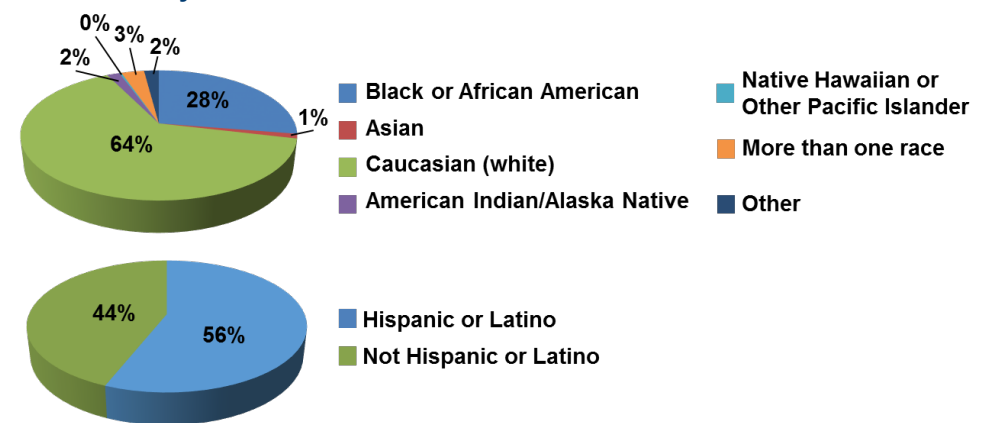
Average Age



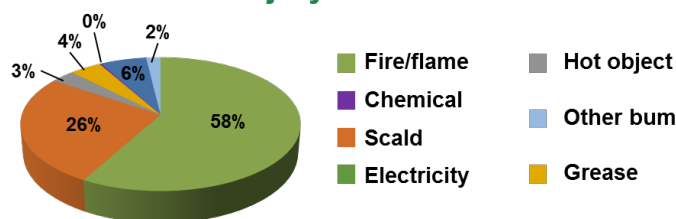
Average Age by Gender



Race/Ethnicity

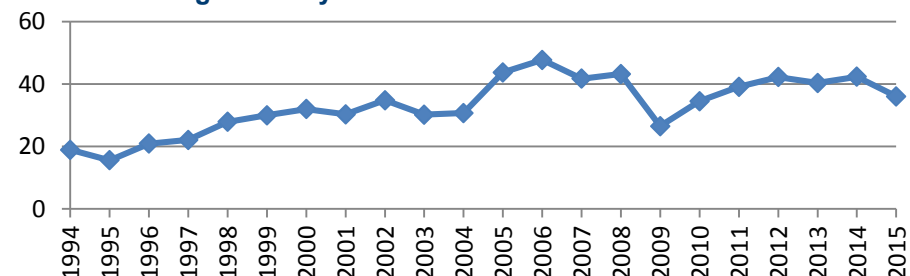


Cause of Burn Injury



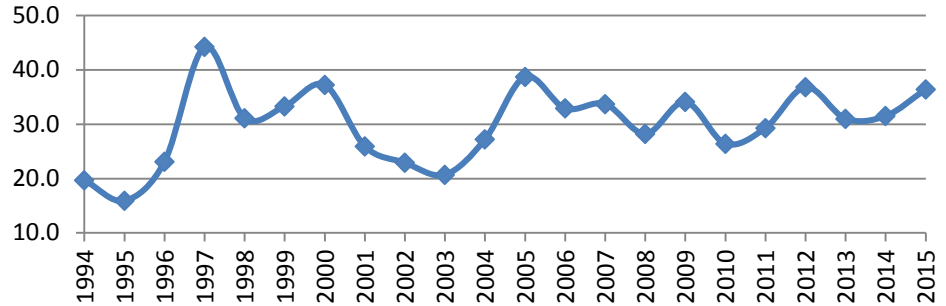
Extent of Injury

Total Percentage of Body Area Burned



The yearly average length of stay in the hospital has ranged from 15 to 44 days since 1994.

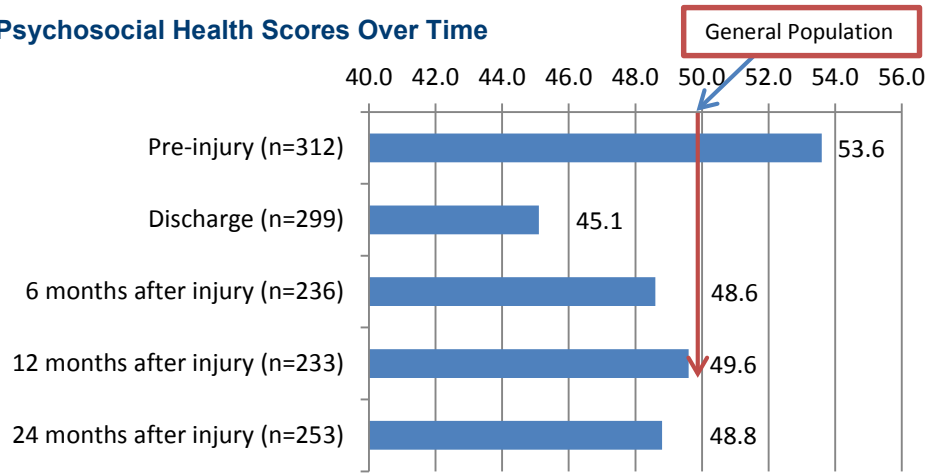
Average Length of Stay in the Hospital



Mental and physical health is lowest for kids with burn injuries at the time of discharge from the hospital. Both physical and mental health improve over time, but may not reach general population levels.

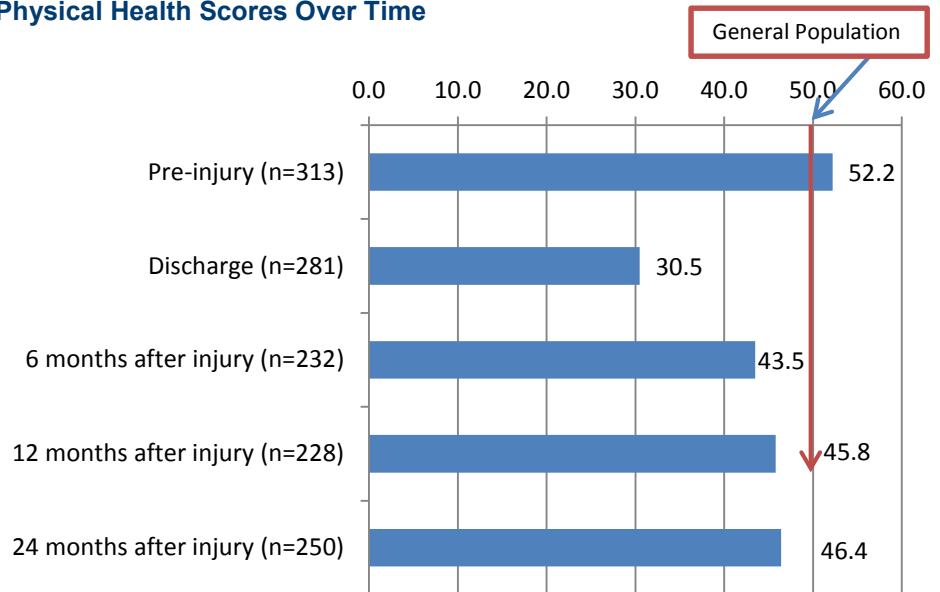
Health and Well-Being of People With Burn Injury

Psychosocial Health Scores Over Time



The SF10 is a set of questions that clinicians ask patients to understand how people are doing physically and mentally. It was developed specifically for asking about the health of kids. Possible scores range from 0 to 100, and higher scores are better. The average psychosocial health and physical health score across the U.S. population is 50.0. The BMS began collecting new outcomes data in 2015. There is not enough data collected to report on these new measures yet, but the 2016 report will feature new measures.

Physical Health Scores Over Time



The National BMS Data Center currently supports the four model system sites funded by NIDILRR shown below*:

Boston-Harvard Burn Injury Model System, Boston, MA

The North Texas Burn Rehabilitation Model System, Dallas, TX

Pediatric Burn Injury Rehabilitation Model System, Galveston, TX

Northwest Regional Burn Model System, Seattle, WA

*Johns Hopkins was funded from 1993–2012.

Source

This is a publication of the Burn Model Systems National Data and Statistical Center, University of Washington, Seattle, WA (Grant Number 90DP0053) and the Model Systems Knowledge Translation Center at American Institutes for Research, Washington, DC (Grant Number 90DP0012). Both are funded by the National Institute on Disability, Independent Living and Rehabilitation Research, Administration of Community Living, U.S. Department of Health and Human Services, Washington, DC.

